

# Condenser Fan Motors

## Multi-Horsepower Condenser Fan Motors

### Ball Bearing

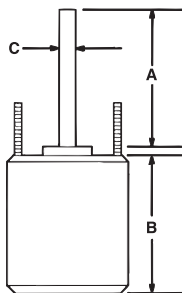
MARS multi-horsepower condenser fan motors are ideal for truck stock. Three 1075 RPM models cover 208-230 volt applications from 1/6 to 1/2 HP. Two 825 RPM models cover 208-230 volt applications from 1/8 to 1/3 HP.

#### Features:

- Rheem mounting holes w/screws installed
- Thru bolt or band mounting
- Water slinger on shaft
- Air conditioning or heat pump duty

#### Specifications:

- Class "B" insulation
- Single phase, 60 Hz
- Thermal overload protected
- UL Recognized



## Multi-Horsepower Condenser Fan Motors

### Ball Bearing - 70°C

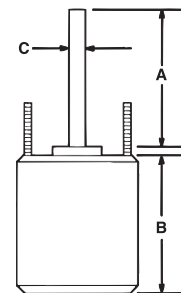
MARS 70°C multi-horsepower SunSlinger condenser fan motors are ideal for truck stock. They are designed to provide reliable operation in a wide range of ambient temperatures. Three 1075 RPM models cover 208-230 volt applications from 1/6 to 1/2 HP. Two 825 RPM models cover 208-230 volt applications from 1/8 to 1/3 HP.

#### Features:

- All angle
- Rheem shell mounting holes with screws installed
- Trane 4.33 bolt circle mounting holes with self tapping screws
- Thru bolt or band mounting
- Water slinger on shaft
- Extra set of nuts on mounting studs

#### Specifications:

- Class "B" insulation
- Single phase, 60 Hertz
- 70°C/158°F
- 36 inch leads
- Thermal overload protected
- Fan duty, continuous, air over
- Totally enclosed
- UL Recognized



#### 20458 & 20459:

- Short shell length
- Just ONE capacitor rating per motor
- Quick & Simple 2 wire installation

## Multi-Horsepower – Reversible Rotation

| MARS NO. | HP      | RPM/SPDS | VOLTS   | AMPS | CAP REQ.    | ENCL. | BRG. | DIMENSIONS |      |     |
|----------|---------|----------|---------|------|-------------|-------|------|------------|------|-----|
|          |         |          |         |      |             |       |      | A          | B    | C   |
| 20458    | 1/6-1/3 | 1075     | 208-230 | 2.8  | 7.5/370     | TEAO  | Ball | 6.50       | 5.00 | 1/2 |
| 20459    | 1/8-1/3 | 825      | 208-230 | 1.9  | 10/370      | TEAO  | Ball | 6.50       | 5.71 | 1/2 |
| 20465    | 1/6-1/3 | 1075/2   | 208-230 | 2.5  | 5/7.5/370   | TEAO  | Ball | 7.00       | 5.16 | 1/2 |
| 20468    | 1/5-1/2 | 1075/2   | 208-230 | 3.6  | 10/12.5/370 | TEAO  | Ball | 5.00       | 6.10 | 1/2 |
| 20469    | 1/6-1/3 | 825/2    | 208-230 | 1.9  | 10/7.5/370  | TEAO  | Ball | 5.00       | 6.10 | 1/2 |

## One-On-One™ Replacement Motors

| MARS NO.                  | HP                    | ROT | RPM/SPDS | VOLTS   | AMPS    | CAP REQ.    | ENCL. | BRG. | DIMENSIONS |      |     |
|---------------------------|-----------------------|-----|----------|---------|---------|-------------|-------|------|------------|------|-----|
|                           |                       |     |          |         |         |             |       |      | A          | B    | C   |
| <b>Emerson 5462H</b>      |                       |     |          |         |         |             |       |      |            |      |     |
| 20462                     | 1/3, 1/4, 1/5, 1/6    | REV | 1075/2   | 208-230 | 2.0     | 5/7.5/370   | TEAO  | Ball | 5.00       | 4.91 | 1/2 |
| <b>Emerson 5482H</b>      |                       |     |          |         |         |             |       |      |            |      |     |
| 20471                     | 1/4, 1/3, 1/2, 3/4    | REV | 1075/2   | 208-230 | 4.2/3.6 | 15/440      | TEAO  | Ball | 5.5        | 6.5  | 1/2 |
| <b>AO Smith FE6003F</b>   |                       |     |          |         |         |             |       |      |            |      |     |
| 20470                     | 1/4, 1/2              | REV | 825/2    | 208-230 | 2.6     | 10/12.5/440 | TEAO  | Ball | 6.5        | 6.1  | 1/2 |
| <b>AO Smith ORM5854BF</b> |                       |     |          |         |         |             |       |      |            |      |     |
| 20457                     | 1/8, 1/10, 1/12, 1/15 | REV | 825/1    | 208-230 | 0.75    | 5/440       | TEAO  | Ball | 6.5        | 4.7  | 1/2 |
| <b>AO Smith ORM5454BF</b> |                       |     |          |         |         |             |       |      |            |      |     |
| 20463                     | 1/8 - 1/15            | REV | 1075/1   | 208-230 | 0.65    | 5/440       | TEAO  | Ball | 6.5        | 4.4  | 1/2 |

The Wiz

The Wiz

| MARS NO. | HP        | ROT | RPM/SP. | VOLTS   | ENCL. | BRG. | DIMENSIONS |      |     | LEAD LENGTHS |
|----------|-----------|-----|---------|---------|-------|------|------------|------|-----|--------------|
|          |           |     |         |         |       |      | A          | B    | C   |              |
| 10458    | 1/6 - 1/3 | Rev | 1075    | 208-230 | TEAO  | Ball | 6.50       | 4.52 | 1/2 | 36"          |
| 10459    | 1/8 - 1/3 | Rev | 825     | 208-230 | TEAO  | Ball | 6.50       | 5.48 | 1/2 | 36"          |
| 10465    | 1/6 - 1/3 | Rev | 1075/2  | 208-230 | TEAO  | Ball | 5.00       | 4.73 | 1/2 | 38"          |
| 10468    | 1/5 - 1/2 | Rev | 1075/2  | 208-230 | TEAO  | Ball | 5.00       | 5.48 | 1/2 | 38"          |
| 10469    | 1/6 - 1/3 | Rev | 825/2   | 208-230 | TEAO  | Ball | 5.00       | 5.48 | 1/2 | 42"          |